



Constructing Grounded Theory

A Practical Guide through Qualitative Analysis

Kathy Charmaz



INTRODUCING QUALITATIVE METHODS provides a series of volumes which introduce qualitative research to the student and beginning researcher. The approach is interdisciplinary and international. A distinctive feature of these volumes is the helpful student exercises.

One stream of the series provides texts on the key methodologies used in qualitative research. The other stream contains books on qualitative research for different disciplines or occupations. Both streams cover the basic literature in a clear and accessible style, but also cover the 'cutting edge' issues in the area.

SERIES EDITOR

David Silverman (Goldsmiths College)

EDITORIAL BOARD

Michael Bloor (University of Wales, Cardiff)

Barbara Czarniawska (University of Gothenburg)

Norman Denzin (University of Illinois, Champaign)

Barry Glassner (University of Southern California)

Jaber Gubrium (University of Missouri)

Anne Murcott (South Bank University)

Jonathan Potter (Loughborough University)

TITLES IN SERIES

Doing Conversation Analysis

Paul ten Have

Qualitative Research in Social Work

Ian Shaw and Nick Gould

Using Foucault's Methods

Gavin Kendall and Gary Wickham

Qualitative Research in Information Systems

Michael D. Myers and David Avison

The Quality of Qualitative Research

Clive Seale

Researching the Visual

Michael Emmison and Philip Smith

Qualitative Evaluation

Ian Shaw

Qualitative Research in Education

Peter Freebody

Researching Life Stories and Family Histories

Robert L. Miller

Using Documents in Social Research

Lindsay Prior

Categories in Text and Talk

Georgia Lepper

Doing Research in Cultural Studies

Paula Saukko

Focus Groups in Social Research

Michael Bloor, Jane Frankland, Michelle

Thomas, Kate Robson

Qualitative Research in Sociology: An

Introduction

Amir B. Marvasti

Qualitative Research Through

Case Studies

Max Travers

Narratives in Social Science

Barbara Czarniawska

Gender and Qualitative Methods

Helmi Jarviluoma, Pirkko Moisala

and Anni Vilkkö

Criminological Research: Understanding

Qualitative Methods

Lesley Noaks and Emma Wincup

Doing Qualitative Health Research

Judith Green and Nicki Thorogood

Using Diaries in Social Research

Andy Alaszewski

Methods of Critical Discourse Analysis

Ruth Wodak and Michael Meyer

Qualitative Marketing Research: A Cultural

Approach

Johanna Moisander and Anu Valtonen

Constructing Grounded Theory

Kathy Charmaz

Constructing Grounded Theory

A Practical Guide Through
Qualitative Analysis

Kathy Charmaz

 **SAGE Publications**

London • Thousand Oaks • New Delhi

2007.02635:2



© Kathy Charmaz 2006

First published 2006
Reprinted 2006

Apart from any fair dealing for the purposes of research or private study, or criticism or review, as permitted under the Copyright, Designs and Patents Act, 1988, this publication may be reproduced, stored or transmitted in any form, or by any means, only with the prior permission in writing of the publishers, or in the case of reprographic reproduction, in accordance with the terms of licences issued by the Copyright Licensing Agency. Inquiries concerning reproduction outside those terms should be sent to the publishers.



SAGE Publications Ltd
1 Oliver's Yard
55 City Road
London EC1Y 1SP

SAGE Publications Inc.
2455 Teller Road
Thousand Oaks, California 91320

SAGE Publications India Pvt Ltd
B-42, Panchsheel Enclave
Post Box 4109
New Delhi 110 017

British Library Cataloguing in Publication data

A catalogue record for this book is available from the British Library

ISBN-10 0-7619-7352-4
ISBN-10 0-7619-7353-2 (pbk)

ISBN-13 978-0-7619-7352-2
ISBN-13 978-0-7619-7353-9 (pbk)

Library of Congress Control Number 2005928035

Typeset by C&M Digital (P) Ltd., Chennai, India
Printed on paper from sustainable resources
Printed in Great Britain by The Cromwell Press Ltd Trowbridge, Wiltshire

Summary of contents

1	An Invitation to Grounded Theory	1
2	Gathering Rich Data	13
3	Coding in Grounded Theory Practice	42
4	Memo-writing	72
5	Theoretical Sampling, Saturation, and Sorting	96
6	Reconstructing Theory in Grounded Theory Studies	123
7	Writing the Draft	151
8	Reflecting on the Research Process	177



Contents

<i>Preface</i>	xi
<i>Acknowledgements</i>	xiv
1 An Invitation to Grounded Theory	1
Emergence of Grounded Theory	4
Constructing Grounded Theory	9
Constructing Grounded Theory at a Glance	10
2 Gathering Rich Data	13
Thinking about Methods	14
Grounded Theory in Ethnography	21
Intensive Interviewing	25
Box 2.1 A Sample of Grounded Theory Interview Questions About a Life Change	30
Textual Analysis	35
Concluding Thoughts	40
3 Coding in Grounded Theory Practice	42
Box 3.1 Grounded Theory Coding Example	44
Grounded Theory Coding	45
Initial Coding	47
Box 3.2 Initial Line-by-Line Coding	52
Focused Coding	57
Box 3.3 Focused Coding	58
Axial Coding	60
Theoretical Coding	63

Reducing Problems in Coding	67
Concluding Thoughts	70
4 Memo-writing	72
Box 4.1 Example of a Memo—Suffering	73
Box 4.2 The Published Version of the Memo on Suffering	77
Methods of Memo-writing	80
Box 4.3 How to Write Memos	80
Box 4.4 Example of Memo-writing	83
Adopting Writers' Strategies: Prewriting Exercises	85
Box 4.5 Example of a Focused Freewrite on Codes from Bonnie Presley's Interview (Excerpt)	90
Using Memos to Raise Focused Codes to Conceptual Categories	91
Box 4.6 Example of a Memo Prompted by Studying an Earlier Memo— The Category of 'Existing from Day to Day'	93
Concluding Thoughts	94
5 Theoretical Sampling, Saturation, and Sorting	96
Theoretical Sampling	99
Saturating Theoretical Categories	113
Theoretical Sorting, Diagramming, and Integrating	115
Concluding Thoughts	121
6 Reconstructing Theory in Grounded Theory Studies	123
What Is Theory?	125
Constructivist and Objectivist Grounded Theory	129
Theorizing in Grounded Theory	133
Inspecting Grounded Theories	140
Concluding Thoughts	148

7	Writing the Draft	151
	Regarding Writing	153
	Revising Early Drafts	154
	Box 7.1 Excerpt from an Early Memo on Disclosure	159
	Box 7.2 The Published Version of the Memo on Disclosure	161
	Returning to the Library: Literature Reviews and Theoretical Frameworks	163
	The Disputed Literature Review	165
	Box 7.3 Writing the Literature Review	168
	Writing the Theoretical Framework	168
	Rendering Through Writing	172
	Concluding Thoughts	176
 8	 Reflecting on the Research Process	 177
	The Core of Grounded Theory: Contested Versions and Revisions	177
	The Union of Comparative Methods and Interaction in Grounded Theory	178
	What Defines a Grounded Theory?	180
	Evaluating Grounded Theory	181
	Criteria for Grounded Theory Studies	182
	Grounded Theory of the Past, Present, and Future	183
	 <i>Glossary</i>	 186
	<i>References</i>	190
	<i>Index</i>	202

Preface

This book takes you through a journey of constructing grounded theory by traversing basic grounded theory steps. The book will provide a path, expand your vistas, quicken your pace, and point out obstacles and opportunities along the way. We can share the journey but the adventure is yours. I will clarify grounded theory strategies and offer guidelines, examples, and suggestions throughout. Although some authors provide methodological maps to follow, I raise questions and outline strategies to indicate possible routes to take. At each phase of the research journey, *your* readings of your work guide your next moves. This combination of involvement and interpretation leads you to the next step. The end-point of your journey emerges from where you start, where you go, and with whom you interact, what you see and hear, and how you learn and think. In short, the finished work is a construction—yours.

Writing about methods can take unpredictable turns. In a recent issue of *Symbolic Interaction*, Howard Becker (2003) recounts why the master ethnographer Erving Goffman avoided writing about his methods. Becker tells us that Goffman believed any methodological advice would go awry and researchers would blame him for the resulting mess. Offering methodological advice invites misunderstanding—and constructive critiques. Unlike Goffman, however, I welcome entering the methodological fray and invite you to join me in it. Possibilities for methodological misunderstandings may abound but also openings for methodological clarifications and advances may occur. Bringing any method beyond a recipe into public purview inevitably invites interpretation and reconstruction—and misunderstandings. Readers and researchers' perspectives, purposes, and practices influence how they will make sense of a method. In the past, researchers have often misunderstood grounded theory methods. Published qualitative researchers add to the confusion when they cite grounded theory as their methodological approach but their work bears little resemblance to it. Numerous researchers have invoked grounded theory as a methodological rationale to justify conducting qualitative research rather than adopting its guidelines to inform their studies.

This book represents my interpretation of grounded theory and contains methodological guidelines, advice, and perspectives. The method has evolved or changed, depending on your perspective, since its originators, Barney G. Glaser and Anselm L. Strauss, set forth their classic statement of grounded theory in 1967. Each has shifted his position on certain points and added others. My version of grounded theory returns to the classic statements of the past century and reexamines them through a methodological lens of the present century. Researchers can use grounded theory methods with either quantitative or qualitative data; however, they have adopted them almost exclusively in qualitative research,

which I address here. Throughout the book, I refer to the materials we work with as 'data' rather than as materials or accounts because qualitative research has a place in scientific inquiry in its own right.

In writing this book I aim to fulfil the following objectives: 1) to offer a set of guidelines for constructing grounded theory research informed by methodological developments over the past four decades; 2) to correct some common misunderstandings about grounded theory; 3) to point out different versions of the method and shifts in position within these versions; 4) to provide sufficient explanation of the guidelines that any budding scholar can follow who has a basic knowledge of research methods; and 5) to inspire beginning and seasoned researchers to embark on a grounded theory project. As consistent with the classic grounded theory statements of Glaser and Strauss, I emphasize the analytic aspects of inquiry while recognizing the importance of having a solid foundation in data. For the most part, I have used published data and excerpts so that you can seek the original sources, should you wish to see how excerpted data fit in their respective narratives.

I hope that you find my construction of grounded theory methods helpful for your construction of new grounded theories. These methods provide a valuable set of tools for developing an analytic handle on your work, and taken to their logical extension, a theory of it. Researchers who move their studies into theory construction may find Chapters 5 and 6 to be of particular interest. I realize, however, that sometimes our research objectives and audiences do not always include explicit theory construction, but providing a useful analytic framework makes a significant contribution. Grounded theory methods foster creating an analytic edge to your work. Evidence abounds that these methods can inform compelling description and telling tales. Whether you pursue ethnographic stories, biographical narratives, or qualitative analyses of interviews, grounded theory methods can help you make your work more insightful and incisive.

A long evolution precedes my traversing the grounds of this book. My ideas arose from two separate sources: an early immersion in epistemological developments in the 1960s and an innovative doctoral program that ignited my imagination. As for many graduate students of the day, Thomas Kuhn's *The Structure of Scientific Revolutions* has had a lasting effect on me, but so did the theoretical physicists who challenged conventional notions of scientific objectivity, reasoning, and truth.

As a member of the first cohort of doctoral students in sociology at the University of California, San Francisco, I had the privilege of learning grounded theory from Barney Glaser in multiple graduate seminars. Each student had a class session when all members analyzed his or her material in a free-wheeling discussion. The seminars sparkled with excitement and enthusiasm. Barney's brilliance shone as he led us away from describing our material and into conceptualizing it in analytic frameworks. I am grateful for having had the opportunity to study with him. Anselm Strauss, my dissertation chair, kept tabs on my work from the day of our first meeting until his death in 1996. He and Barney shared a commitment to raising new generations of scholars to become productive grounded theorists. When I gave Anselm a piece of writing—often just a fragment—in the morning, he would call me by evening to talk about it. Although Anselm would disagree with several points in this book, I hope that

much of it might have caught his interest and have elicited the familiar chuckle that so many generations of students cherished.

A book may have long antecedents that precede its writing. My journey with grounded theory began with Barney Glaser and Anselm Strauss, whose lasting influence has not only permeated my work, but also my consciousness. So, too, in less transparent ways, my rendering of grounded theory contains lessons learned during my doctoral studies from Fred Davis, Virginia Olesen, and Leonard Schatzman about the quality of data collection and scholarship. Since then, I have developed the ideas in this book. Varied requests to articulate my version of grounded theory have enlarged my vision of it. Although none of the following people were involved in this project, responding to their earlier requests helped me to clarify my position and advance my understanding of grounded theory. I thank Paul Atkinson, Alan Bryman, Amarda Coffey, Tom Cooke, Robert Emerson, Sara Delamont, Norm Denzin, Uta Gerhardt, Jaber Gubrium, James Holstein, Yvonna Lincoln, John Lofland, Lyn Lofland, and Jonathan A. Smith.

This book could not have evolved without the support and encouragement of my editor at Sage, Patrick Brindle, and the series editor, David Silverman. I thank David Silverman for inviting me to join this series and appreciate his faith that the book would materialize. Special thanks are due to Patrick Brindle for his efforts to make it possible. I am grateful to Patrick Brindle, Antony Bryant, Adele Clarke, Virginia Olesen, and David Silverman for their astute readings of the manuscript and wonderful comments on it. Jane Hood, Devon Lanin, and Kristine Snyder each read and made useful comments on a chapter. Several times, I discussed chapters with members of the Faculty Writing Program at Sonoma State University and always enjoyed our conversations. Anita Catlin, Dolly Freidel, Jeanette Koshar, Melinda Milligan, Myrna Goodman, and Craig Winston raised sound questions. In addition to participating in stimulating discussions, Julia Allen, Noel Byrne, Diana Grant, Mary Halavais, Kim Hester-Williams, Matt James, Michelle Jolly, Scott Miller, Tom Rosen, Richard Senghas, and Thaine Stearns also wrote insightful commentaries on chapters in various stages of development. My conversations about grounded theory with Kath Melia in the early stages of the project were always stimulating.

On a more technical level, Leslie Hartman managed several nagging clerical tasks with skill and enthusiasm and Claire Reeve and Vanessa Harwood at Sage kept me apprised of details. No book comes to fruition without time to think and write. A sabbatical leave from Sonoma State University during Spring, 2004 greatly expedited my writing. Throughout the book, I draw on some excerpted or adapted material from my past publications on grounded theory with Sage Publications and I thank Patrick Brindle for permission to reprint.

Acknowledgements

The author and publisher thank the following organizations and publishers for granting permission to reproduce:

The American Occupational Therapy Foundation for excerpts from the article The self as habit: The reconstruction of self in chronic illness by Charmaz, K. (2002).

Blackwell Publishing for excerpts from Charmaz, K. (1995). The body, identity and self, *The Sociological Quarterly* 36: 657–680.

Rutgers University Press for excerpts from Charmaz, K. (1991). *Good days, bad days: The self in chronic illness and time*.

Springer Science and Business Media for an excerpt from Lempert, L.B. (1997) The other side of help: Negative effects in the help-seeking processes of abused women, *Qualitative Research*, 20, 289–309.

The Society for the Study of Symbolic Interaction, University of California Press for two figures (5.1 and 5.2) from Adele E. Clarke (2003). Situational analyses: Grounded theory mapping after the postmodern turn, *Symbolic Interaction*, 26 (4): 553–576.

1

An Invitation to Grounded Theory

A journey begins before the travellers depart. So, too, our grounded theory adventure begins as we seek information about what a grounded theory journey entails and what to expect along the way. We scope the terrain that grounded theory covers and that we expect to traverse. Before leaving we look back into the history of grounded theory in the twentieth century and look forward into its yet unrealized potential for the twenty-first century. Our last step before embarking is to lay out a map of the method and of this book.

In this book, I invite you to join a journey through a qualitative research project. You might ask, what does the journey entail? Where do I start? How do I proceed? Which obstacles might lie ahead? This book takes a short trip through data collection then follows a lengthy trail through analysis of qualitative data. Along the way, numerous guides ease your way through the analytic and writing processes. Throughout the journey we will climb up analytic levels and raise the theoretical import of your ideas while we keep a taut rope tied to your data on solid ground.

What might a path between collecting and analyzing data look like? For a moment, pretend that you have begun conducting interviews for a new research project exploring the sudden onset of a serious chronic illness. Imagine meeting Margie Arlen during her senior year in high school. Margie tells you about her troubles that accompanied a rapid onset of rheumatoid arthritis. You piece together the following sequence of events from her story:

At age 14, Margie was a star student and athlete. She was clearly slated for success in college and beyond. Her teachers saw the makings of a scholar, her coaches marveled at her athletic prowess, and her peers viewed her as in a class beyond them. Then her health rapidly deteriorated from arthritis. In a few months, she went from being lightning on the soccer field to hardly walking. The awe that other students had accorded her shifted to distance and disdain. Once, her talents and skills had set her apart from the crowd that clamored around her. Then her neck brace and belabored movements kept her apart as fellow students silently shunned her. Still, Margie learned deeper lessons. She said:

It's [her illness and disability] taught me that the important things—like, I used to be real introverted and scared to talk with other people in a way. But now it's like I feel I can take my talents, not the sports and things like that, but I can take my talents and I go out and talk to people and become their friend, like, encouraging people and things like that, and I found that that's, like, more important and that builds more self-esteem, just being able to do things for other people, like serving missions and things like that, than, you know, being able to go out and prove that you are a good athlete. So it's changed me in that I'm a lot more outgoing now, and it's changed me in that I've realized more what's important.

Then, like her interviewer, you gently inquired, 'So what's important?' to which Margie replied,

I think in a lot of ways it's instead of making myself look good, it's making others look good. I was always a perfectionist, and I wanted to do things fast. If I said I was going to do something, I was going to do it no matter how late I had to stay up at night ... And those type of things take a toll on our body, and when I realized it's okay to say, 'I'm sorry I can't get this done in time or something, or I just can't do it—say 'no' in the first place—then I think that's important because otherwise you totally run yourself into the ground if you have a chronic disease, and you're going to make yourself worse. So that took a long time to learn. But I think it's really important, like setting your priorities. Concentrating on what's important and then doing that first and then letting go of whatever else. (Charmaz, 2002b: 39s)

Now think about how to study stories like Margie's. How do you make sense of the events that Margie Arlen describes? What might you see in her statements that you would like to explore further with her and others who have experienced physical losses? Imagine that you pursued these questions in a qualitative study and aimed to develop a conceptual analysis of the materials. How would you go about conducting your research and creating the analysis?

Grounded theory methods will help you get started, stay involved, and finish your project. The research process will bring surprises, spark ideas, and hone your analytic skills. Grounded theory methods foster seeing your data in fresh ways and exploring your ideas about the data through early analytic writing. By adopting grounded theory methods you can direct, manage, and streamline your data collection and, moreover, construct an original analysis of your data.

What are grounded theory methods? Stated simply, grounded theory methods consist of systematic, yet flexible guidelines for collecting and analyzing qualitative data to construct theories 'grounded' in the data themselves. The guidelines offer a set of general principles and heuristic devices rather than formulaic rules (see also Atkinson, Coffey, & Delamont, 2003). Thus, data form the foundation of our theory and our analysis of these data generates the concepts we construct. Grounded theorists collect data to develop theoretical analyses from the beginning of a project. We try to learn what occurs in the research settings we join and what our research participants' lives are like. We study how

they explain their statements and actions, and ask what analytic sense we can make of them.

We begin by being open to what is happening in the studied scenes and interview statements so that we might learn about our research participants' lives. We would attend to what we hear, see, and sense during Margie Arlen's interview. Grounded theorists start with data. We construct these data through our observations, interactions, and materials that we gather about the topic or setting. We study empirical events and experiences and pursue our hunches and potential analytic ideas about them. Most qualitative methods allow researchers to follow up on interesting data in whatever way they devise. Grounded theory methods have the additional advantage of containing explicit guidelines that show us *how* we may proceed.

Margie Arlen's intriguing remarks about learning to attend to other people and to limit her activities could serve as starting points for analysis as well as for further data collection. In subsequent interviews, we would listen to the stories of other young people who have suffered recent physical losses and explore how they handled their changed lives. If possible, we would add ethnographic data by joining our research participants while at school, physical therapy, a support group, or just hanging out with friends. How do young people respond to serious illness and disability? What contributes to their different responses? We raise questions that emanate from thinking about our collected data and shape those data we wish to obtain.

As grounded theorists, we study our early data and begin to separate, sort, and synthesize these data through qualitative coding. Coding means that we attach labels to segments of data that depict what each segment is about. Coding distills data, sorts them, and gives us a handle for making comparisons with other segments of data. Grounded theorists emphasize what is happening in the scene when they code data.

Several initial codes stood out to me in Margie's interview: 'being changed,' 'concentrating on what's important,' and 'learning limits.' Such codes and our ideas about them point to areas to explore during subsequent data collection. We would compare the events and views that Margie talks about—and our codes with the next person we talk with, and the next person, and the next.

By making and coding numerous comparisons, our analytic grasp of the data begins to take form. We write preliminary analytic notes called memos about our codes and comparisons and any other ideas about our data that occur to us. Through studying data, comparing them, and writing memos, we define ideas that best fit and interpret the data as tentative analytic categories. When inevitable questions arise and gaps in our categories appear, we seek data that answer these questions and may fill the gaps. We may return to Margie and other research participants to learn more and to strengthen our analytic categories. As we proceed, our categories not only coalesce as we interpret the collected data but also the categories become more theoretical because we engage in successive levels of analysis.

Our analytic categories and the relationships we draw between them provide a conceptual handle on the studied experience. Thus, we build levels of abstraction directly from the data and, subsequently, gather additional data to

check and refine our emerging analytic categories. Our work culminates in a 'grounded theory,' or an abstract theoretical understanding of the studied experience. Margie's remarks may start us on a research journey; doing comparative analysis and developing our categories advances our progress. In short, grounded theory methods demystify the conduct of qualitative inquiry—and expedite your research and enhance your excitement about it.

Emergence of Grounded Theory

The Historical Context

Grounded theory methods emerged from sociologists Barney G. Glaser and Anselm L. Strauss's (1965, 1967) successful collaboration during their studies of dying in hospitals (see Glaser & Strauss, 1965, 1968; Strauss & Glaser, 1970). In the early 1960s in the United States, hospital staff seldom talked about or even acknowledged dying and death with seriously ill patients. Glaser and Strauss's research team observed how dying occurred in a variety of hospital settings; they looked at how and when professionals and their terminal patients knew they were dying and how they handled the news. Glaser and Strauss gave their data explicit analytic treatment and produced theoretical analyses of the social organization and temporal order of dying. They explored analytic ideas in long conversations and exchanged preliminary notes analyzing observations in the field. As they constructed their analyses of dying, they developed systematic methodological strategies that social scientists could adopt for studying many other topics. Glaser and Strauss's book *The Discovery of Grounded Theory* (1967) first articulated these strategies and advocated *developing* theories from research grounded in data rather than *deducing* testable hypotheses from existing theories.

Glaser and Strauss entered the methodological scene at a propitious time. Qualitative research in sociology was losing ground. By the mid-1960s, the long tradition of qualitative research in sociology had waned as sophisticated quantitative methods gained dominance in the United States and quantitative methodologists reigned over departments, journal editorial boards, and funding agencies. Despite the awe accorded to a few qualitative stars, the presence of several strong qualitative doctoral programs, and sharp critiques of quantification from critical theorists, the discipline marched toward defining research in quantitative terms.

What kinds of methodological assumptions supported the move toward quantification? Every way of knowing rests on a theory of how people develop knowledge. Beliefs in a unitary method of systematic observation, replicable experiments, operational definitions of concepts, logically deduced hypotheses, and confirmed evidence—often taken as *the* scientific method—formed the assumptions upholding quantitative methods. These assumptions supported positivism, the dominant paradigm of inquiry in routine natural science.

Mid-century positivist conceptions of scientific method and knowledge stressed objectivity, generality, replication of research, and falsification of competing hypotheses and theories. Social researchers who adopted the positivist paradigm aimed to discover causal explanations and to make predictions about an external,

knowable world. Their beliefs in scientific logic, a unitary method, objectivity, and truth legitimized reducing qualities of human experience to quantifiable variables. Thus, positivist methods assumed an unbiased and passive observer who collected facts but did not participate in creating them, the separation of facts from values, the existence of an external world separate from scientific observers and their methods, and the accumulation of generalizable knowledge about this world. Positivism led to a quest for valid instruments, technical procedures, replicable research designs, and verifiable quantitative knowledge.

Only narrowly scientific—that is, quantitative—ways of knowing held validity for positivists; they rejected other possible ways of knowing, such as through interpreting meanings or intuitive realizations. Thus, qualitative research that analyzed and interpreted research participants' meanings sparked disputes about its scientific value. Quantitative researchers of the 1960s saw qualitative research as impressionistic, anecdotal, unsystematic, and biased. The priority they gave to replication and verification resulted in ignoring human problems and research questions that did not fit positivistic research designs. If proponents of quantification acknowledged qualitative research at all, they treated it as a preliminary exercise for refining quantitative instruments. Thus, some quantitative researchers used interviews or observations to help them design more precise surveys or more effective experiments.

As positivism gained strength in mid-century, the division between theory and research simultaneously grew. Growing numbers of quantitative researchers concentrated on obtaining concrete information. Those quantitative researchers who connected theory and research tested logically deduced hypotheses from an existing theory. Although they refined extant theory, their research seldom led to new theory construction.

Glaser and Strauss's Challenge

In *The Discovery of Grounded Theory*, Glaser and Strauss countered the ruling methodological assumptions of mid-century. Their book made a cutting-edge statement because it contested notions of methodological consensus *and* offered systematic strategies for qualitative research practice. Essentially, Glaser and Strauss joined epistemological critique with practical guidelines for action. They proposed that systematic qualitative analysis had its own logic and could generate theory. In particular, Glaser and Strauss intended to construct abstract theoretical explanations of social processes.

For Glaser and Strauss (1967; Glaser, 1978; Strauss, 1987), the defining components of grounded theory practice include:

- Simultaneous involvement in data collection and analysis
- Constructing analytic codes and categories from data, not from preconceived logically deduced hypotheses
- Using the constant comparative method, which involves making comparisons during each stage of the analysis
- Advancing theory development during each step of data collection and analysis

- Memo-writing to elaborate categories, specify their properties, define relationships between categories, and identify gaps
- Sampling aimed toward theory construction, not for population representativeness
- Conducting the literature review *after* developing an independent analysis.

Engaging in these practices helps researchers to control their research process and to increase the analytic power of their work (see also Bigus, Hadden & Glaser, 1994; Charmaz, 1983, 1990, 1995b, 2003; Glaser, 1992, 1994; Glaser & Strauss, 1967; Stern, 1994b; Strauss, 1987; Strauss & Corbin, 1990, 1994). Glaser and Strauss aimed to move qualitative inquiry beyond descriptive studies into the realm of explanatory theoretical frameworks, thereby providing abstract, conceptual understandings of the studied phenomena. They urged novice grounded theorists to develop fresh theories and thus advocated delaying the literature review to avoid seeing the world through the lens of extant ideas. Glaser and Strauss's theorizing contrasted with armchair and logico-deductive theorizing because they began with data and systematically raised the conceptual level of their analyses while maintaining the strong foundation in data. Consistent with their reasoning, a completed grounded theory met the following criteria: a close fit with the data, usefulness, conceptual density, durability over time, modifiability, and explanatory power (Glaser, 1978, 1992; Glaser & Strauss, 1967).

The Discovery of Grounded Theory (1967) provided a powerful argument that legitimized qualitative research as a credible methodological approach in its own right rather than simply as a precursor for developing quantitative instruments. In the book, Glaser and Strauss (1967) challenged:

- Beliefs that qualitative methods were impressionistic and unsystematic
- Separation of data collection and analysis phases of research
- Prevailing views of qualitative research as a precursor to more 'rigorous' quantitative methods
- The arbitrary division between theory and research
- Assumptions that qualitative research could not generate theory.

Glaser and Strauss built on earlier qualitative researchers' implicit analytic procedures and research strategies and made them explicit. During the first half of the twentieth century, qualitative researchers had taught generations of students through mentoring and lengthy immersion in field research (Rock, 1979). Previous guides for conducting field research primarily dealt with data collection methods and researchers' membership roles in field settings. Authors told their readers little about how to tackle analyzing the piles of collected data. Glaser and Strauss's written guidelines for conducting qualitative research changed the oral tradition and made analytic guidelines accessible.

Merging Divergent Disciplinary Traditions

Grounded theory marries two contrasting—and competing—traditions in sociology as represented by each of its originators: Columbia University positivism and

Chicago school pragmatism and field research. The epistemological assumptions, logic, and systematic approach of grounded theory methods reflect Glaser's rigorous quantitative training at Columbia University with Paul Lazarsfeld. Glaser intended to codify qualitative research methods as Lazarsfeld had codified quantitative research (see, for example, Lazarsfeld & Rosenberg, 1955). Codifying qualitative research methods entailed specifying explicit strategies for conducting research and therefore demystified the research process.

Glaser also advocated building useful 'middle-range' theories, as the Columbia University theorist Robert K. Merton (1957) had proposed. Middle-range theories consisted of abstract renderings of specific social phenomena that were grounded in data. Such middle-range theories contrasted with the 'grand' theories of mid-century sociology that swept across societies but had no foundation in systematically analyzed data.

Glaser imbued grounded theory with dispassionate empiricism, rigorous codified methods, emphasis on emergent discoveries, and its somewhat ambiguous specialized language that echoes quantitative methods. Although *The Discovery of Grounded Theory* transformed methodological debates and inspired generations of qualitative researchers, Glaser's book *Theoretical Sensitivity* (1978) provided the most definitive early statement of the method.

Nonetheless, Strauss's Chicago school heritage also pervades the grounded theory method. Strauss viewed human beings as active agents in their lives and in their worlds rather than as passive recipients of larger social forces. He assumed that process, not structure, was fundamental to human existence; indeed, human beings created structures through engaging in processes. For Strauss, subjective and social meanings relied on our use of language and emerged through action. The construction of action was the central problem to address. In short, Strauss brought notions of human agency, emergent processes, social and subjective meanings, problem-solving practices, and the open-ended study of action to grounded theory.

All these ideas reflected the pragmatist philosophical tradition that Strauss embraced while in his doctoral program at the University of Chicago (Blumer, 1969; Mead, 1934). Pragmatism informed symbolic interactionism, a theoretical perspective that assumes society, reality, and self are constructed through interaction and thus rely on language and communication. This perspective assumes that interaction is inherently dynamic and *interpretive* and addresses how people create, enact, and change meanings and actions. Consider how Margie Arlen told of reinterpreting what had become important to her and of changing her actions accordingly. Symbolic interactionism assumes that people can and do think about their actions rather than respond mechanically to stimuli. Through the influence of Herbert Blumer and Robert Park, Strauss adopted both symbolic interactionism and the Chicago legacy of ethnographic research (Park & Burgess, 1921).

Glaser employed his analytic skills to codify qualitative analysis and thus constructed specific guidelines for doing it. Glaser and Strauss shared a keen interest in studying fundamental social or social psychological processes within a social setting or a particular experience such as having a chronic illness. Thus, for them, a finished grounded theory explains the studied process in new theoretical terms,

explicates the properties of the theoretical categories, and often demonstrates the causes and conditions under which the process emerges and varies, and delineates its consequences.

Most grounded theories are substantive theories because they address delimited problems in specific substantive areas such as a study of how newly disabled young people reconstruct their identities. The logic of grounded theory can reach across substantive areas and into the realm of formal theory, which means generating abstract concepts and specifying relationships between them to understand problems in multiple substantive areas (see Kearney, 1998). For example, if we developed a theory of identity loss and reconstruction among young people with new disabilities, we could examine our theoretical categories in other areas of life in which people have experienced a sudden major loss, such as occurs with a partner's sudden death, lay-off from work, or loss of place due to a natural disaster. Each exploration within a new substantive area can help us to refine the formal theory. Glaser and Strauss's logic led them to formal theorizing when they took the theoretical categories that they had developed about status passage during their studies of dying and examined it as a generic process that cut across varied substantive areas (see Glaser & Strauss, 1971).

The *Discovery* book found receptive audiences and became a major force in igniting the 'qualitative revolution' (Denzin & Lincoln, 1994: ix) that gained momentum throughout the latter part of the twentieth century. Glaser and Strauss's explicit strategies and call for developing theories from qualitative data spread throughout disciplines and professions. Their book inspired new generations of social scientists and professionals, especially nurses, to pursue qualitative research. Many doctoral students in nursing at the University of California, San Francisco learned grounded theory methods from Glaser or Strauss and later became leaders in their profession and experts in qualitative inquiry (see Chenitz & Swanson, 1986; Schreiber & Stern, 2001).

Developments in Grounded Theory

Since Glaser and Strauss's classic statements in 1967 (Glaser & Strauss) and 1978 (Glaser), they have taken grounded theory in somewhat divergent directions (Charmaz, 2000). For years, Glaser remained consistent with his earlier exegesis of the method and thus defined grounded theory as a method of discovery, treated categories as emergent from the data, relied on direct and, often, narrow empiricism, and analyzed a basic social process. Strauss (1987) moved the method toward verification and his co-authored works with Juliet M. Corbin (Corbin & Strauss, 1990; Strauss & Corbin, 1990, 1998) furthered this direction.

Strauss and Corbin's version of grounded theory also favors their new technical procedures rather than emphasizing the comparative methods that distinguished earlier grounded theory strategies. Glaser (1992) contends that Strauss and Corbin's procedures force data and analysis into preconceived categories and, thus, contradict fundamental tenets of grounded theory. Despite Glaser's numerous objections to Strauss and Corbin's version of grounded theory, their book serves as a powerful statement of the method and has instructed graduate students throughout the world.

In the 1960s, Glaser and Strauss fought the dominance of positivistic quantitative research. Ironically, by 1990 grounded theory not only became known for its rigor and usefulness, but also for *its* positivistic assumptions. It has gained acceptance from quantitative researchers who sometimes adopt it in projects that use mixed methods. The flexibility and legitimacy of grounded theory methods continues to appeal to qualitative researchers with varied theoretical and substantive interests.

Meanwhile, a growing number of scholars have moved grounded theory away from the positivism in both Glaser's and Strauss and Corbin's versions of the method (see Bryant, 2002, 2003; Charmaz, 2000, 2002a, 2006a; Clarke, 2003, 2005; Seale, 1999). Like any container into which different content can be poured, researchers can use basic grounded theory guidelines such as coding, memo-writing, and sampling for theory development, and comparative methods are, in many ways, neutral.

Grounded theory guidelines describe the steps of the research process and provide a path through it. Researchers can adopt and adapt them to conduct diverse studies. *How* researchers use these guidelines is not neutral; nor are the assumptions they bring to their research and enact during the process. Antony Bryant (2002) and Adele Clarke (2003, 2005) join me in contending that we can use basic grounded theory guidelines with twenty-first century methodological assumptions and approaches. This book takes on the challenge of how to do that.

Constructing Grounded Theory

In their original statement of the method, Glaser and Strauss (1967) invited their readers to use grounded theory strategies flexibly in their own way. I accept their invitation and return to past grounded theory emphases on examining processes, making the study of action central, and creating abstract interpretive understandings of the data. This book provides *a* way of doing grounded theory that takes into account the theoretical and methodological developments of the past four decades.

I view grounded theory methods as a set of principles and practices, not as prescriptions or packages. In the following chapters, I emphasize flexible guidelines, not methodological rules, recipes, and requirements. During our journey through the research process, I aim to clarify what grounded theorists do and to show you how we do it. Hence, I discuss the guidelines throughout subsequent chapters with sufficient detail so that you can use them on your own and give them a sound appraisal.

Grounded theory methods can complement other approaches to qualitative data analysis, rather than stand in opposition to them. I occasionally draw on excellent examples from qualitative studies whose authors do not claim grounded theory allegiance or whose writing only acknowledges specific aspects of the approach. These authors bring an imaginative eye and an incisive voice to their studies—and inspire good work. Their works transcend their immediate circles.

The classic grounded theory texts of Glaser and Strauss (1967) and Glaser (1978) provide an explicit method for analyzing processes. I have talked about

the research process and studying process, but what is a process?¹ A process consists of unfolding temporal sequences that may have identifiable markers with clear beginnings and endings and benchmarks in between. The temporal sequences are linked in a process and lead to change. Thus, single events become linked as part of a larger whole. Even the most regimented process may contain surprises because the present arises from the past but is never quite the same. The present emerges with new characteristics (Mead, 1932). Thus the experience and outcome of a specific process has some degree of indeterminacy, however small it might be.

Throughout the book, I build on my earlier discussions of the grounded theory method (see esp. Charmaz, 1990, 2000, 2002a, 2003, 2005) and on a symbolic interactionist theoretical perspective. Grounded theory serves as a way to learn about the worlds we study and a method for developing theories to understand them. In the classic grounded theory works, Glaser and Strauss talk about discovering theory as emerging from data separate from the scientific observer. Unlike their position, I assume that neither data nor theories are discovered. Rather, we are part of the world we study and the data we collect. We *construct* our grounded theories through our past and present involvements and interactions with people, perspectives, and research practices.

My approach explicitly assumes that any theoretical rendering offers an *interpretive* portrayal of the studied world, not an exact picture of it. (Charmaz, 1995b, 2000; Guba & Lincoln, 1994; Schwandt, 1994). Research participants' implicit meanings, experiential views—and researchers' finished grounded theories—are constructions of reality. In keeping with its Chicago school antecedents, I argue for building on the pragmatist underpinnings in grounded theory and advancing interpretive analyses that acknowledge these constructions.

Constructing Grounded Theory at a Glance

The organization of this book reproduces the logic of grounded theory in linear form. We start with gathering data and end by writing our analysis and reflecting on the entire process. In practice, however, the research process is not so linear. Grounded theorists stop and write whenever ideas occur to them. Some of our best ideas may occur to us late in the process and may lure us back to the field to gain a deeper view. Quite often, we discover that our work suggests pursuing more than one analytic direction. Thus, we may focus on certain ideas first and finish one paper or project about them but later return to our data and unfinished analysis in another area. Throughout this book, I treat grounded theory methods as constituting a craft that researchers practice. Like any craft, practitioners vary in their emphasis on one or another aspect but taken together share commonalities, which I address in the book (see Figure 1.1).

Chapter 2, 'Gathering Rich Data,' considers decisions about getting started and choosing approaches to data-gathering. Researchers can use grounded theory strategies with a variety of data collection methods. I treat these methods as tools to use rather than as recipes to follow. I advocate gathering

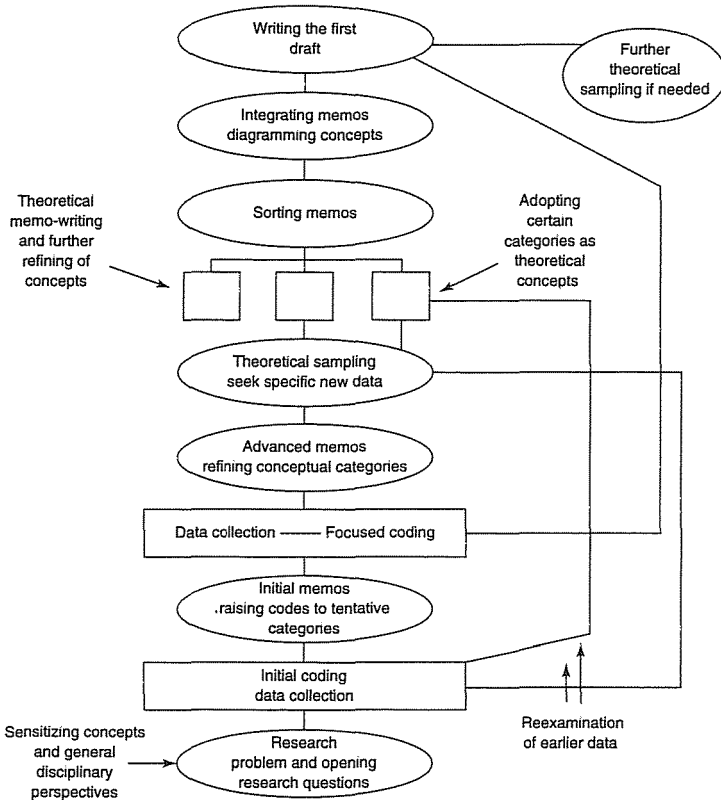


FIGURE 1.1 The grounded theory process

rich—detailed and full—data and placing them in their relevant situational and social contexts. This chapter introduces several major approaches to data-gathering and gives guidelines for using data to learn how people make sense of their situations and act on them.

As we learn how our research participants make sense of their experiences, we begin to make analytic sense of their meanings and actions. Chapter 3, 'Coding in Grounded Theory Practice,' shows how to do coding and thus label bits of data according to what they indicate. The chapter focuses on two main types of grounded theory coding: 1) initial line-by-line coding, a strategy which prompts you to study your data closely—line-by-line—and to begin conceptualizing your ideas, and 2) focused coding, which permits you to separate, sort, and synthesize large amounts of data.

Certain codes crystallize meanings and actions in the data. Writing extended notes called memos on telling codes helps you to develop your ideas. In Chapter 4, 'Memo-writing,' I show how grounded theorists take these codes apart and analyze them in memos. You write memos throughout your research.

Memos provide ways to compare data, to explore ideas about the codes, and to direct further data-gathering. As you work with your data and codes, you become progressively more analytic in how you treat them and thus you raise certain codes to conceptual categories.

Chapter 5, 'Theoretical Sampling, Saturation, and Sorting,' explains theoretical sampling, the grounded theory strategy of obtaining further selective data to refine and fill out your major categories. In this chapter, I also question the meaning of theoretical saturation as indicating that no new properties of the category emerge during data collection. I next discuss sorting memos to fit the theoretical categories and show relationships that integrate the work. I introduce diagramming because increasing numbers of grounded theorists use it as an alternative way to integrate their ideas and to establish the logic of their ordering.

Chapter 6, 'Reconstructing Theory in Grounded Theory Studies,' asks you to reassess what theory means. I explore meanings of theory in the social sciences and conceptions of theorizing in grounded theory. I juxtapose positivist and interpretive kinds of grounded theory to clarify how contrasting forms of analysis flow from different starting points. The chapter ends with a discussion of three examples of theorizing in grounded theory and a reconstruction of their respective theoretical logic. Each example differs in theoretical emphasis, scope, and reach but taken together they show the versatility and usefulness of grounded theory methods.

Chapter 7, 'Writing the Draft,' explains differences between writing to develop an analysis and writing for an audience. Grounded theory strategies lead you to concentrate on your analysis rather than on arguments about it, to delay the literature review, and to construct an original theory that interprets your data. These strategies contradict traditional requirements for reporting research. The chapter reconciles tensions between grounded theory methods and traditional forms of social scientific reportage by offering guidelines for constructing arguments, writing the literature review, and developing a theoretical framework. The chapter ends by addressing ways to render our ideas through writing.

Last, Chapter 8, 'Reflecting on the Process,' discusses criteria for assessing grounded theories as products of research and ends the book with questions about our quest for knowledge and a call for action.

And now our journey through the research process begins ...

NOTE

- 1 My definition of process draws heavily on pragmatist conceptions of emergence and partly concurs with aspects of varied views expressed by Russell Kelley, Dan E. Miller, Dennis Waskul, Angus Vail, and Phillip Vannini during a listserv discussion on SSSITalk, January 25, 2005. (www.soci.niu.edu/~archives/SSSITALK)

References

- Alasuutari, P. (1992). *Desire and craving: A cultural theory of alcoholism*. New York: State University of New York Press.
- . (1995). *Researching culture: Qualitative method and cultural studies*. London: Sage.
- . (1996). Theorizing in qualitative research: A cultural studies perspective. *Qualitative Inquiry*, 2, 371–384.
- . (2004). The globalization of qualitative research. In Clive Seale, Giampietro Gobo, Jaber F. Gubrium, & David Silverman (Eds.) *Qualitative research practice* (pp. 595–608). London: Sage.
- Albas, C., & Albas, D. (1988). Emotion work and emotion rules: The case of exams. *Qualitative Sociology*, 11, 259–274.
- Albas, D., & Albas, C. (1988). Aces and bombers: The post-exam impression management strategies of students. *Symbolic Interaction*, 11, 289–302.
- . (1993). Disclaimer mannerisms of students: How to avoid being labeled as cheaters. *Canadian Review of Sociology and Anthropology*, 30, 451–467.
- Anderson, E. (1976). *A place on the corner*. Chicago: University of Chicago Press.
- . (2003). Jelly's place: An ethnographic memoir. *Symbolic Interaction*, 26, 217–237.
- Anspach, R. (1979). From stigma to identity politics: Political activism among the physically disabled and former mental patients. *Social Science & Medicine*, 13A, 765–763.
- Arendell, T. (1997). Reflections on the researcher–researched relationship: A woman interviewing men. *Qualitative Sociology*, 20, 341–368.
- Ashworth, P. D. (1995). The meaning of 'participation' in participant observation. *Qualitative Health Research*, 5, 366–387.
- Atkinson, P. (1990). *The ethnographic imagination: Textual constructions of reality*. London: Routledge.
- Atkinson, P., Coffey, A., & Delamont, S. (2003). *Key themes in qualitative research: Continuities and changes*. New York: Rowan and Littlefield.
- Baker, C., Wuest, J., & Stern, P. (1992). Methods slurring: The grounded theory, phenomenology example. *Journal of Advanced Nursing*, 17, 1355–1360.
- Baszanger, I. (1998). *Inventing pain medicine: From the laboratory to the clinic*. New Brunswick, NJ: Rutgers University Press.
- Becker, H. S. ([1967] 1970). Whose side are we on? Reprinted as pp. 123–134 in his *Sociological work: Method and substance*. New Brunswick, NJ: Transaction Books.
- . (2003). The politics of presentation: Goffman and total institutions. *Symbolic Interaction*, 26, 659–669.
- Becker, P. H. (1998). Pearls, pith, and provocations: Common pitfalls in grounded theory research. *Qualitative Health Research*, 3(2), 254–260.
- Bergson, H. ([1903] 1961). *An introduction to metaphysics*. (Mabelle L. Anderson, translator). New York: Philosophical Library, Inc.
- Berk, R. A., Berk, S. F., Loseke, D. R., & Rauma, D. (1983). Mutual combat and other family violence myths. In D. Finkelhor, et al. (Eds.), *The dark side of families* (pp. 197–212). Beverly Hills, CA: Sage.

- Berk, R. A., Berk, S. F., Newton, J., & Loseke, D. R. (1984). Cops on call: Summoning the police to the scene of spousal violence. *Law & Society Review*, 18(3), 480-498.
- Berk, S. F., & Loseke, D. R. (1980-1981). Handling family violence: Situational determinants of police arrest in domestic disturbances. *Law & Society Review*, 15(2), 317-346.
- Biernacki, P. (1986). *Pathways from heroin addiction: Recovery without treatment*. Philadelphia: Temple University Press.
- Biernacki, P. and Davis, F. (1970). Turning off: A study of ex-marijuana users. Paper presented at the Conference on Drug Use and Subcultures, Asilomar, California.
- Bigus, O. E., Hadden, S. C., & Glaser, B. G. (1994). The study of basic social processes. In B. G. Glaser (Ed.), *More grounded theory methodology: A reader* (pp. 38-64). Mill Valley, CA: Sociology Press.
- Blumer, H. (1969). *Symbolic interactionism*. Englewood Cliffs, NJ: Prentice-Hall.
- . (1979). Comments on 'George Herbert Mead and the Chicago tradition of sociology'. *Symbolic Interaction*, 2(2), 21-22.
- Bogard, C. (2001). Claimsmakers and contexts in early constructions of homelessness: A comparison of New York City and Washington, D.C. *Symbolic Interaction*, 24, 425-454.
- Bowker, L. H., & Mauer, L. (1987). The medical treatment of battered wives. *Women & Health*, 12(1), 25-45.
- Bowker, G., & Star, S. L. (1999). *Sorting things out: Classification and its consequences*. Cambridge, MA: MIT Press.
- Bryant, A. (2002). Re-grounding grounded theory. *Journal of Information Technology Theory and Application*, 4(1), 25-42.
- . (2003). A constructive/ist response to Glaser. *FQS: Forum for Qualitative Social Research*, 4(1), www.qualitative-research.net/fqs/.
- Blumer, M. (1984). *The Chicago school of sociology: Institutionalization, diversity, and the rise of sociology*. Chicago: University of Chicago Press.
- Burawoy, M. (1991). The extended case method. In M., Burawoy, A. Burton, A. A. Ferguson, K. Fox, J. Gamson, N. Gartrell, L. Hurst, C. Kurzman, L. Salzinger, J. Schiffman, & S. Ui, *Ethnography unbound: Power and resistance in the modern metropolis* (pp. 271-290). Berkeley: University of California Press.
- . (2000). Grounding globalization. In M. Burawoy, J. A. Blum, S. George, G. Sheba, Z. Gille, T. Gowan, L. Haney, M. Klawiter, S. A. Lopez, S. O' Riain, & M. Thayer *Global ethnography: Forces, connections, and imaginations in a postmodern world* (pp. 337-373). Berkeley, CA: University of California Press.
- Burke, P. J. (1980). The self: Measurements from an interactionist perspective. *Social Psychology Quarterly*, 43, 18-29.
- Bury, M. (1982). Chronic illness as biographical disruption. *Sociology of Health & Illness*, 4, 167-182.
- . (1988). Meanings at risk: The experience of arthritis. In R. Anderson & M. Bury (Eds.), *Living with chronic illness* (pp. 89-116). London: Unwin Hyman.
- . (1991). The sociology of chronic illness: A review of research and prospects. *Sociology of Health & Illness*, 13, 452-468.
- Calkins, K. (1970). Time perspectives, marking and styles of usage. *Social Problems*, 17, 487-501.
- Casper, M. (1998). *The unborn patient*. New Brunswick, NJ: Rutgers University Press.
- Chang, D. B. K. (1989). An abused spouse's self-saving process: A theory of identity transformation. *Sociological Perspectives*, 32, 535-550.
- Chang, J. H.-L. (2000). Symbolic interaction and transformation of class structure: The case of China. *Symbolic Interaction*, 23, 223-251.
- Charmaz, K. (1973). *Time and identity: The shaping of selves of the chronically ill*. PhD dissertation, University of California, San Francisco.

- . (1983a). The grounded theory method: An explication and interpretation. In R. M. Emerson (Ed.), *Contemporary field research* (pp. 109–126). Boston: Little Brown.
- . (1983b). Loss of self: A fundamental form of suffering in the chronically ill. *Sociology of Health & Illness*, 5, 168–195.
- . (1987). Struggling for a self: Identity levels of the chronically ill. In J. A. Roth & P. Conrad (Eds.), *Research in the sociology of health care: Vol. 6. The experience and management of chronic illness* (pp. 283–321). Greenwich, CT: JAI Press.
- . (1990). Discovering chronic illness: Using grounded theory. *Social Science and Medicine*, 30, 1161–1172.
- . (1991a). *Good days, bad days: The self in chronic illness and time*. New Brunswick, NJ: Rutgers University Press.
- . (1991b). Translating graduate qualitative methods into undergraduate teaching: Intensive interviewing as a case example. *Teaching Sociology*, 19, 384–395.
- . (1995a). Body, identity, and self: Adapting to impairment. *The Sociological Quarterly*, 36, 657–680.
- . (1995b). Grounded theory. In J. A. Smith, R. Harré, & L. Van Langenhove (Eds.), *Rethinking methods in psychology* (pp. 27–49). London: Sage.
- . (1998). Research standards and stories: Conflict and challenge. Plenary presentation, Qualitative Research Conference. University of Toronto, Toronto, Ontario. May 15.
- . (1999). Stories of suffering: Subjective tales and research narratives. *Qualitative Health Research*, 9, 362–382.
- . (2000). Constructivist and objectivist grounded theory. In N. K. Denzin & Y. Lincoln (Eds.), *Handbook of Qualitative Research* (2nd ed., pp. 509–535). Thousand Oaks, CA: Sage.
- . (2001). Qualitative interviewing and grounded theory analysis. In J. F. Gubrium & J. A. Holstein (Eds.), *Handbook of interview research* (pp. 675–694). Thousand Oaks, CA: Sage.
- . (2002a). Grounded theory: Methodology and theory construction. In N. J. Smelser & P. B. Baltes (Eds.), *International encyclopedia of the social and behavioral sciences* (pp. 6396–6399). Amsterdam: Pergamon.
- . (2002b). The self as habit: The reconstruction of self in chronic illness. *The Occupational Therapy Journal of Research*, 22 (Supplement 1), 31s–42s.
- . (2002c). Stories and silences: Disclosures and self in chronic illness. *Qualitative Inquiry*, 8(3), 302–328.
- . (2003). Grounded theory. In Jonathan A. Smith (Ed.), *Qualitative psychology: A practical guide to research methods* (pp. 81–110). London: Sage.
- . (2004). Premises, principles, and practices in qualitative research: Revisiting the foundation. *Qualitative Health Research*, 14, 976–993.
- . (2005). Grounded theory in the 21st century: A qualitative method for advancing social justice research. In N. Denzin & Y. Lincoln (Eds.), *Handbook of qualitative research* (3rd ed., pp. 507–535). Thousand Oaks, CA: Sage.
- . (2006a). Grounded theory. In G. Ritzer (Ed.), *Encyclopedia of sociology*. Cambridge, MA: Blackwell.
- . (2006b). Stories, silences, and self: Dilemmas in disclosing chronic illness. In D. Brashers D. Goldstein (Eds.), *Health communication*. New York: Lawrence Erlbaum.
- Charmaz, K., & Mitchell, R. G. (1996). The myth of silent authorship: Self, substance, and style in ethnographic writing. *Symbolic Interaction*, 19(4), 285–302.
- . (2001). An invitation to grounded theory in ethnography. In P. Atkinson, A. Coffey, S. Delamonte, J. Lofland, & L. H. Lofland (Eds.), *Handbook of Ethnography* (pp. 160–174). London: Sage.

- Charmaz, K., & Olesen, V. (1997). Ethnographic research in medical sociology. *Sociological Methods and Research*, 25(4), 452–494.
- Chenitz, W. C., & Swanson, J. M. (Eds.) (1986). *From practice to grounded theory: qualitative research in nursing*. Reading, MA: Addison–Wesley.
- Clark, C. (1997). *Misery and company: Sympathy in everyday life*. Chicago: University of Chicago Press.
- Clarke, A. E. (1998). *Disciplining reproduction: Modernity, American life sciences, and the problems of sex*. Berkeley, CA: University of California Press.
- . (2003). Situational analyses: Grounded theory mapping after the postmodern turn. *Symbolic Interaction*, 26, 553–576.
- . (2005). *Situational Analysis: Grounded theory after the postmodern turn*. Thousand Oaks, CA: Sage.
- Clifford, J., & Marcus, G. (1986). *Writing culture: The poetics and politics of ethnography*. Berkeley, CA: University of California Press.
- Coffey, A., & Atkinson, P. (1996). *Making sense of qualitative data: Complementary research strategies*. Thousand Oaks, CA: Sage.
- Coffey, A., Holbrook, P., & Atkinson, P. (1996). Qualitative data analysis: Technologies and representations. *Sociological Research On-line*, 1.
- Collins, P. H. (1990). *Black feminist thought: Knowledge, consciousness, and the politics of empowerment*. New York: Routledge, Chapman, Hall.
- Collins, R. (2004a). Interaction ritual chains. Distinguished Lecture, sponsored by Alpha Kappa Delta, presented at the American Sociological Association. San Francisco, August 14.
- . (2004b). *Interaction ritual chains*. Princeton, NJ: Princeton University Press.
- Cooley, C. H. (1902). *Human nature and social order*. New York: Charles Scribner's Sons.
- Conrad, P. (1990). Qualitative research on chronic illness: A commentary on method and conceptual development. *Social Science & Medicine*, 30, 1257–1263.
- Corbin, J. M. (1998). Alternative interpretations: Valid or not? *Theory & Psychology*, 8, 121–128.
- Corbin, J., & Strauss, A. L. (1987). Accompaniments of chronic illness: Changes in body, self, biography, and biographical time. In J. A. Roth & P. Conrad (Eds.), *Research in the sociology of health care: Vol. 6. The experience and management of chronic illness* (pp. 249–281). Greenwich, CT: JAI Press.
- . (1990). Grounded theory research: Procedures, canons, and evaluative criteria. *Qualitative Sociology*, 13(1), 3–21.
- . (1988). *Unending Work and Care: Managing Chronic Illness at Home*. San Francisco: Jossey–Bass.
- Creswell, J. (1998). *Qualitative inquiry and research design: Choosing among five traditions*. Thousand Oaks, CA: Sage.
- Dahlberg, C. C., & Jaffe, J. (1977). *Stroke: A doctor's personal story of his recovery*. New York: Norton.
- Dalton, M. (1959). *Men who manage*. New York: Wiley.
- Daly, K. (2002). Time, gender, and the negotiation of family schedules. *Symbolic Interaction*, 25, 323–342.
- Davis, F. (1963). *Passage through crisis: Polio victims and their families*. Indianapolis: Bobbs–Merrill.
- Davis, M. S. (1971). 'That's interesting!' Towards a phenomenology of sociology and a sociology of phenomenology. *Philosophy of the Social Sciences*, 1, 309–344.
- Deely, J. N. (1990). *Basics of semiotics*. Bloomington: Indiana University Press.
- Denzin, N. K. (1984). *On understanding emotion*. San Francisco: Jossey–Bass.

- . (1994). The art and politics of interpretation. In N. K. Denzin & Y. S. Lincoln (Eds.), *Handbook of qualitative research* (pp. 500–515). Thousand Oaks, CA: Sage.
- Denzin, N. K., & Lincoln, Y. S. (Eds.) (1994). *Handbook of qualitative research*. Thousand Oaks, CA: Sage.
- Derricourt, R. (1996). *An author's guide to scholarly publishing*. Princeton, NJ: Princeton University.
- Dey, I. (1999). *Grounding grounded theory*. San Diego: Academic Press.
- . (2004). Grounded theory. In C. Seale, G. Gobo, J. F. Gubrium, & D. Silverman (Eds.), *Qualitative research practice* (pp. 80–93). London: Sage.
- Diamond, T. (1992). *Making gray gold*. Chicago: University of Chicago Press.
- DiGiacomo, S. M. (1992). Metaphor as illness: Postmodern dilemmas in the representation of body, mind and disorder. *Medical Anthropology*, 14, 109–137.
- Dingwall, R. (1976). *Aspects of Illness*. Oxford: Martin Robertson.
- Dobash, R. E., & Dobash, R. P. (1979). *Violence against wives*. New York: Free Press.
- . (1981). Community response to violence against wives: Charivari, abstract justice and patriarchy. *Social Problems*, 28, 563–581.
- Durkheim, E. (1902/1960). *The division of labor in society*. Glencoe, IL: Free Press.
- . (1915/1965). *Elementary forms of religious life*. New York: Free Press.
- . (1925/1961). *Moral education: A study in the theory and application of the sociology of education*. New York: Free Press.
- . (1951). *Suicide*. Glencoe, IL: Free Press.
- Edwards, S. (1987). Provoking her own demise: From common assault to homicide. In J. Hanmer and M. Maynard (Eds.), *Women, violence and social control* (pp. 152–168). Atlantic Highlands: Humanities press International, Inc.
- Eide, L. (1995). *Work in progress: A guide to writing and revising* (3rd ed.). New York: St. Martins.
- Elbow, P. (1981). *Writing with power*. New York: Oxford University Press.
- Ellis, C. (1986). *Fisher Folk: Two communities on Chesapeake Bay*. Lexington, KY: The University of Kentucky.
- . (1995). Emotional and ethical quagmires of returning to the field. *Journal of Contemporary Ethnography*, 24(1), 68–98.
- Emerson, R. M. (1983). Introduction to Part II: Theory and evidence and representation. In R. M. Emerson (Ed.), *Contemporary field research: A collection of readings* (pp. 93–107). Boston: Little Brown.
- . (2001). Introduction to Part III: producing ethnographies: Theory, evidence and representation. In R. M. Emerson (Ed.), *Contemporary field research: Perspectives and formulations* (2nd ed., pp. 281–316). Prospect Heights, IL: Waveland Press.
- . (2004). Working with 'Key Incidents.' In Clive Seale, Giampietro Gobo, Jaber F. Gubrium, & David Silverman (Eds.), *Qualitative Research Practice* (pp. 457–472). London: Sage.
- Fabrega, H. Jr., & Manning, P. K. (1972). Disease, illness and deviant careers. In R. A. Scott & J. D. Douglas (Eds.), *Theoretical perspectives on deviance* (pp. 93–116). New York: Basic Books.
- Fann, K. T. (1970). *Peirce's theory of abduction*. The Hague: Martinus Nijhoff.
- Ferraro, K. J. (1987). Negotiating trouble in a battered women's shelter. In M. J. Deegan, & M. R. Hill (Eds.), *Women and symbolic interaction* (pp. 379–394). Boston: Allen & Unwin.
- . (1989). Policing woman battering. *Social Problems*, 30(3), 61–74.
- Ferraro, K. J., & Johnson, J. M. (1983). How women experience battering: The process of victimization. *Social Problems*, 30, 325–339.

- Fielding, N. G., & Lee, R. M. (1998). *Computer analysis and qualitative data*. London: Sage.
- Finch, J. and Mason, J. (1990). Decision taking in the fieldwork process: Theoretical sampling and collaborative working. In R. G. Burgess (Ed.), *Studies in qualitative methodology: Reflections on field experience* (pp. 25–50). Greenwich, CT: JAI Press.
- Fine, G. A. (1986). *With the boys: Little league baseball and preadolescent culture*. Chicago: University of Chicago Press.
- . (1998). *Morel tales: The culture of mushrooming*. Cambridge, MA: Harvard University Press.
- Flick, U. (1998). *An introduction to qualitative research*. Thousand Oaks, CA: Sage.
- Flowers, L. (1993). *Problem-solving strategies for writing* (4th ed.). Fort Worth, TX: Harcourt Brace, Jovanovich.
- Frank, A. W. (1990). Bringing bodies back in: A decade review. *Theory, Culture & Society*, 7, 131–162.
- . (1991a). *At the will of the body*. Boston: Houghton Mifflin.
- . (1991b). For a sociology of the body: An analytical review. In M. Featherstone, M. Hepworth, & B. S. Turner (Eds.), *The body: Social process and cultural theory* (pp. 36–102). London: Sage.
- Frankenberg, R. (1990). Disease, literature and the body in the era of AIDS – A preliminary exploration. *Sociology of Health & Illness*, 12, 351–360.
- Freund, P. E. S. (1982). *The civilized body: Social domination, control, and health*. Philadelphia, PA: Temple University Press.
- . (1988). Bringing society into the body: Understanding socialized human nature. *Theory and Society*, 17, 839–864.
- . (1990). The expressive body: A common ground for the sociology of emotions and health and illness. *Sociology of Health & Illness*, 12, 452–477.
- Gadow, S. (1982). Body and self: A dialectic. In V. Kestenbaum (Ed.), *The humanity of the ill: Phenomenological perspectives* (pp. 86–100). Knoxville, TN: University of Tennessee Press.
- Geertz, C. (1973). *The interpretation of cultures*. New York: Basic Books.
- Gerhardt, U. (1979). Coping and social action: Theoretical reconstruction of the life-event approach. *Sociology of Health & Illness*, 1, 195–225.
- . 1989. *Ideas about illness: An intellectual and political history of medical sociology*. New York: New York University Press.
- Giles-Sims, J. (1983). *Wife battering: A systems theory approach*. New York: The Guilford Press.
- Glaser, B. G. (1978). *Theoretical sensitivity*. Mill Valley, CA: The Sociology Press.
- . (1992). *Basics of grounded theory analysis*. Mill Valley, CA: The Sociology Press.
- . (Ed.) (1994). *More grounded theory*. Mill Valley, CA: The Sociology Press.
- . (1998). *Doing grounded theory: Issues and discussions*. Mill Valley, CA: The Sociology Press.
- . (2001) *The grounded theory perspective: Conceptualization contrasted with description*. Mill Valley, CA: The Sociology Press.
- . (2002). Constructivist grounded theory? Forum qualitative Sozialforschung/ Forum: Qualitative Social Research [On-line Journal], 3. Available at: <http://www.qualitative-research.net/fqs-texte/3-02/3-02glaser-e-htm>.
- . (2003). *Conceptualization contrasted with description*. Mill Valley, CA: The Sociology Press.
- Glaser, B. G., & Strauss, A. L. (1965). *Awareness of dying*. Chicago: Aldine.
- . (1967). *The discovery of grounded theory*. Chicago: Aldine.
- . (1968). *Time for dying*. Chicago: Aldine.
- . (1971). *Status passage*. Chicago: Aldine.

- Glassner, B. (1988). *Bodies*. New York: Putnam.
- . (1989). Fitness and the postmodern self. *Journal of Health and Social Behavior*, 30, 180–191.
- Goffman, E. (1959). *The presentation of self in everyday life*. Garden City, NY: Doubleday Anchor Books.
- . (1961). *Asylums*. Garden City, NY: Doubleday Anchor Books.
- . (1963). *Stigma*. Englewood Cliffs, NJ: Prentice-Hall.
- . (1967). *Interaction ritual*. Garden City, NY: Doubleday Anchor Books.
- . (1969). *Strategic interaction*. Philadelphia: University of Pennsylvania Press.
- Gorden, R. (1987). *Interviewing: strategies, techniques, and tactics*. Homewood, IL: Dorsey.
- Goulding, C. (2002). *Grounded theory: A practical guide for management, business, and market researchers*. London: Sage.
- Guba, E. G., & Lincoln, Y. S. (1994). Competing paradigms in qualitative research. In N. K. Denzin, & Y. S. Lincoln (Eds.), *Handbook of qualitative research* (pp. 105–118). Thousand Oaks, CA: Sage.
- Gubrium, J. F. (1993). *Speaking of life: Horizons of meaning for nursing home residents*. Hawthorne, NY: Aldine de Gruyter.
- Gubrium, J. F., & Holstein, J. A. (1997). *The new language of qualitative research*. New York: Oxford University Press.
- Gubrium, J. F. and Holstein, J. A. (Eds.) (2001). *Handbook of interview research: Context and method*. Thousand Oaks, CA: Sage.
- Hall, W. A., & Callery, P. (2001). Enhancing the rigor of grounded theory: Incorporating reflexivity and relationality. *Qualitative Health Research*, 11, 257–272.
- Hartsock, N. C. M. (1998). *The feminist standpoint revisited and other essays*. Boulder, CO: Westview.
- Henwood, K., & Pidgeon, N. (2003). Grounded theory in psychological research. In P. M. Camic, J. E. Rhodes, & L. Yardley (Eds.), *Qualitative research in psychology: Expanding perspectives in methodology and design* (pp. 131–155). Washington, DC: American Psychological Association.
- Hermes, J. (1995). *Reading women's magazines*. Cambridge, UK: Polity Press.
- Hertz, R. (2003). Paying forward and paying back. *Symbolic Interaction*, 26, 473–486.
- Hewitt, J. P. (1992). *Self and society*. New York: Simon and Schuster.
- Hogan, N., Morse, J. M., & Tasón, M. C. (1996). Toward an experiential theory of bereavement. *Omega*, 33, 43–65.
- Holliday, A. (2002). *Doing and writing qualitative research*. London: Sage.
- Holstein, J. A., & Gubrium, J. F. (1995). *The active interview*. Thousand Oaks, CA: Sage.
- Hood, J. C. (1983). *Becoming a two-job family*. New York: Praeger.
- Jankowski, M. S. (1991). *Islands in the street: Gangs and American urban society*. Berkeley, CA: University of California Press.
- Kearney, Margaret H. (1998). Ready to wear: Discovering grounded formal theory. *Research in Nursing & Health*, 21, 179–186.
- Kelle, U. (2005, May). Emergence vs. forcing of empirical data? A crucial problem of 'grounded theory' reconsidered [52 paragraphs]. *Forum Qualitative Sozialforschung/Forum: Qualitative Social Research* [On-line journal] 6(2), Art. 27. Available at <http://www.qualitative-research.net/fqs-texte/2-05/05-2-27-e.htm> [Date of Access: 05-30-05].
- Kestenbaum, V. (1982). Introduction: The Experience of Illness. In V. Kestenbaum (Ed.), *The humanity of the ill: Phenomenological perspectives* (pp. 3–38). Knoxville: University of Tennessee Press.
- Kleinman, A., Brodwin, D., Good, B. J., & Good, M. D. (1991). Introduction. In M. D. Good, P. E. Brodwin, B. J. Good, & A. Kleinman (Eds.), *Pain as human experience: An anthropological perspective* (pp. 1–28). Berkeley: University of California Press.

- Kotarba, J. A. (1994). Thoughts on the body: Past, present, and future. *Symbolic Interaction*, 17, 225–230.
- Kuhn, T. S. (1962). *The structure of scientific revolutions*. Chicago: University of Chicago Press.
- Kusow, A. (2003). Beyond indigenous authenticity: Reflections on the inside/outside debate in immigration research. *Symbolic Interaction*, 26, 591–599.
- Latour, B., & Woolgar, S. ([1979] 1986). *Laboratory life: The social construction of scientific facts* (2nd ed.). Princeton, NJ: Princeton University Press.
- Layder, D. (1998). *Sociological practice: Linking theory and social research*. London: Sage.
- Lazarsfeld, P. and Rosenberg, M. (Eds.) (1955). *The language of social research; a reader in the methodology of social research*. Glencoe, IL: Free Press.
- Lempert, L. B. (1996). The line in the sand: Definitional dialogues in abusive relationships. N. K. Denzin (Ed.), *Studies in Symbolic Interaction*, 18 (pp. 171–195). Greenwich, CT: JAI Press.
- . (1997). The other side of help: the negative effects of help-seeking processes of abused women. *Qualitative Research*, 20, 289–309.
- Lewis, K. (1985). *Successful living with chronic illness*. Wayne, NJ: Avery.
- Lindesmith, A., Strauss, A. L., & Denzin, N. K. (1988). *Social psychology*. Englewood Cliffs, NJ: Prentice-Hall.
- Locke, K. (2001). *Grounded theory in management research*. Thousand Oaks, CA: Sage.
- Locker, D. (1983). *Disability and disadvantage: The consequences of chronic illness*. London: Tavistock.
- Lofland, J. (1970). Interactionist imagery and analytic interruptus. In T. Shibutani (Ed.), *Human nature and collective behavior*. Englewood Cliffs, NJ: Prentice-Hall.
- Lofland, J., & Lofland, L. H. (1984). *Analyzing social settings* (2nd ed.). Belmont, CA: Wadsworth.
- . (1995). *Analyzing social settings* (3rd ed.). Belmont, CA: Wadsworth.
- Lonkila, M. (1995). Grounded theory as an emerging paradigm for computer-assisted qualitative data analysis. In K. Udo (Ed.), *Computer-aided qualitative data analysis: Theory, methods and practice* (pp. 41–51). London: Sage.
- Loseke, D. R. (1987). Lived realities and the construction of social problems: The case of wife abuse. *Symbolic Interaction*, 10, 229–243.
- . (1992). *The battered woman and shelters: The social construction of wife abuse*. Albany, NY: State University of New York Press.
- Luker, K. (1984). *Abortion and the politics of motherhood*. Berkeley, CA: University of California Press.
- Lynd, R. S. (1939). *Knowledge for what?: The place of social science in American culture*. Princeton, NJ: Princeton University Press.
- MacDonald, L. (1988). The experience of stigma: Living with rectal cancer. In R. Anderson & M. Bury (Eds.), *Living with chronic illness* (pp. 177–202). London: Unwin Hyman.
- MacKinnon, C. A. (1993). Feminism, marxism, method and the state: Toward a feminist jurisprudence. In P. B. Bart and E. G. Moran (Eds.), *Violence against women* (pp. 201–208). Newbury Park, CA: Sage.
- Maines, D. R. (2001). *The faultline of consciousness: A view of interactionism in sociology*. New York: Aldine de Gruyter.
- Markovsky, B. (2004). Theory construction. In G. Ritzer (Ed.), *Encyclopedia of social theory, volume II* (pp. 830–834). Thousand Oaks, CA: Sage.
- Martin, D. (1976). *Battered wives*. New York: Pocket Books.
- Maynard, D. (2003). *Good news, bad news: Conversational order in everyday talk and clinical settings*. Chicago: University of Chicago Press.
- Mead, G. H. (1932). *Philosophy of the present*. LaSalle, IL: Open Court Press.

- . (1934). *Mind, self and society*. Chicago: University of Chicago Press.
- Melia, K. M. (1987). *Learning and working: The occupational socialization of nurses*. London: Tavistock.
- . (1996). Rediscovering Glaser. *Qualitative Health Research*, 6, 368–378.
- Merton, R. K. (1957). *Social theory and social structure*. Glencoe, IL: Free Press.
- Miller, D. E. (2000). Mathematical dimensions of qualitative research. *Symbolic Interaction*, 23, 399–402.
- Miller, G. (1997). Contextualizing texts: Studying organizational texts. In G. Miller & R. Dingwall (Eds.), *Context and method in qualitative research* (pp. 77–91). London: Sage.
- Mills, T. (1985). The assault on the self: Stages in coping with battering husbands. *Qualitative Sociology*, 8, 103–123.
- Mitchell, R. G. (1991). Field notes. Unpublished manuscript, Oregon State University, Corvallis, OR.
- . (2002). *Dancing to armageddon: Survivalism and chaos in modern times*. Chicago: University of Chicago Press.
- Morrill, C. (1995). *The executive way: Conflict management in corporations*. Chicago: University of Chicago Press.
- Morse, J. M. (1995). The significance of saturation. *Qualitative Health Research*, 5, 147–149.
- Murphy, E., & Dingwall, R. (2003). *Qualitative methods and health policy research*. New York: Aldine de Gruyter.
- Murphy, R. F. (1987). *The body silent*. New York: Henry Holt.
- Olesen, V. (1994). Problematic bodies: Past, present, and future. *Symbolic Interaction*, 17, 231–237.
- Olesen, V., Schatzman, L., Dries, N., Hatton, D., & Chico, N. (1990). The mundane ailment and the physical self: Analysis of the social psychology of health and illness. *Social Science & Medicine*, 30, 449–455.
- Pagelow, M. D. (1984). *Family Violence*. Praeger: New York.
- Park, R. E., & Burgess, E. W. (Eds.) (1921). *The city*. Chicago: University of Chicago Press.
- Parsons, T. (1953). *The social system*. Glencoe, IL: Free Press.
- Peirce, C. S. (1958). *Collected Papers*. Cambridge, MA: Harvard University Press.
- Pollner, M., & Emerson, R. M. (2001). Ethnomethodology and ethnography. In P. Atkinson, A. Coffey, S. Delamont, J. Lofland, & L. H. Lofland (Eds.), *Handbook of ethnography* (pp. 118–135). London: Sage.
- Prior, L. F. (2003). *Using documents in social research*. London: Sage.
- Prus, R. C. (1987). Generic social processes: Maximizing conceptual development in ethnographic research. *Journal of Contemporary Ethnography*, 16, 250–293.
- . (1996). *Symbolic interaction and ethnographic research: Intersubjectivity and the study of human lived experience*. Albany, NY: State University of New York Press.
- Radley, A. (1989). Style, discourse and constraint in adjustment to chronic illness. *Sociology of Health & Illness*, 11, 230–252.
- Radley, A., & Green, R. (1987). Illness as adjustment: A methodology and conceptual framework. *Sociology of Health & Illness*, 9, 179–206.
- Reinharz, S. (1992). *Feminist methods in social research*. New York: Oxford University Press.
- Reinharz, S., & Chase, S. E. (2001). Interviewing women. In J. F. Gubrium & J. A. Holstein (Eds.), *Handbook of interview research* (pp. 221–238). Thousand Oaks, CA: Sage.
- Richardson, L. (1990). *Writing strategies: Researching diverse audiences*. Newbury Park, CA: Sage.
- . (1994). Writing: A method of inquiry. In N. K. Denzin & Y. S. Lincoln (Eds.), *Handbook of qualitative research* (pp. 516–529). Thousand Oaks, CA: Sage.
- Rico, G. L. (1983). *Writing the natural way: Using right-brain techniques to release your expressive powers*. Los Angeles: J. P. Tarcher.
- Ritzer, G., & Goodman, D. J. (2004). *Classical sociological theory* (4th ed.). Boston: McGraw Hill.

- Robrecht, L. C. (1995). Grounded theory: Evolving methods. *Qualitative Health Research*, 5, 169–177.
- Rock, P. (1979). *The making of symbolic interactionism*. London: Macmillan.
- Rosenthal, G. (2004). Biographical research. In C. Seale, G. Gobo, J. F. Gubrium, & D. Silverman (Eds.), *Qualitative research practice* (pp. 48–64). London: Sage.
- Roth, J. (1963). *Timetables*. New York: Bobbs-Merrill.
- Rubin, H. J., & Rubin, I. S. (1995). *Qualitative interviewing: The art of hearing*. Thousand Oaks, CA: Sage.
- Sanders, C. R. (1990). *Customizing the body*. Philadelphia, PA: Temple University Press.
- Sarton, M. (1988). *After the stroke: A journal*. New York: W. W. Norton.
- Schechter, S. (1982). *Women and male violence*. Boston: South End Press.
- Scheper-Hughes, N., & Lock, M. M. (1987). The mindful body: A prolegomenon to future work in medical anthropology. *Medical Anthropology Quarterly*, 1, 6–41.
- Schneider, M. A. (1997). Social dimensions of epistemological disputes: The case of literary theory. *Sociological Perspectives*, 40, 243–264.
- Schreiber, R. S. & Stern, P. N. (Eds.) (2001). *Using Grounded Theory in Nursing*. New York: Springer.
- Shostak, S. (2004). Environmental justice and genomics: Acting on the futures of environmental health. *Science as Culture*, 13, 539–562.
- Schutz, A. (1967 [1932]). *The phenomenology of the social world*. Evanston, IL: Northwestern University Press.
- Schwalbe, M., & Wolkomir, M. (2002). Interviewing men. In J. F. Gubrium & J. A. Holstein (Eds.), *Handbook of interview research* (pp. 203–219). Thousand Oaks, CA: Sage.
- Schwandt, T. A. (1994). Constructivist, interpretivist approaches to human inquiry. In N. K. Denzin & Y. S. Lincoln (Eds.), *Handbook of qualitative research* (pp. 118–137). Thousand Oaks, CA: Sage.
- Seale, C. (1999). *The quality of qualitative research*. London: Sage.
- Seidman, I. E. (1998). *Interviewing as qualitative research: A guide for researchers in education and the social sciences* (2nd ed.). New York: Teachers College Press.
- Shilling, C. (1993). *The body and social theory*. London: Sage.
- Silverman, D. (1997). *Discourses of counselling: HIV counselling as social interaction*. London: Sage.
- . (2000). *Doing qualitative research: A practical handbook*. London: Sage.
- . (2001). *Interpreting qualitative data: Methods for analysing talk, text, and interaction*. (2nd ed.). London: Sage.
- . (2004). *Instances or sequences?: Improving the state of the art of qualitative research*. Paper presented at the Qualitative Research Section of the European Sociological Association, Berlin, September.
- Smith, D. E. (1987). *The everyday world as problematic: A feminist sociology*. Boston, MA: Northeastern University Press.
- . (1999). *Writing the social: Critique, theory and investigations*. Toronto: University of Toronto Press.
- Soulliere, D., Britt, D. W., & Maines, D. R. (2001). Conceptual modeling as a toolbox for grounded theorists. *Sociological Quarterly*, 42(2), 253–269.
- Speedling, E. (1982). *Heart attack: The family response at home and in the hospital*. New York: Tavistock.
- Star, S. L. (1989). *Regions of the mind: Brain research and the quest for scientific certainty*. Palo Alto, CA: Stanford University Press.
- . (1999). The ethnography of infrastructure. *American Behavioral Scientist*, 43, 377–391.
- Stark, E. and Filcraft, A. (1983). Social knowledge, social policy, and the abuse of women. In D. Finkelhor, et al. (Eds.), *The dark side of families* (pp. 330–348). Beverly Hills, CA: Sage.

- . (1988). Violence among intimates—An epidemiological review. In V. B. VanHasselt, et al. (Eds.), *Handbook of Family Violence* (pp. 293–317). New York: Plenum Press.
- Stephenson, J. S. (1985). *Death, grief, and mourning: Individual and social realities*. New York: Free Press.
- Stern, P. N. (1994a). Eroding grounded theory. In J. Morse (Ed.), *Critical issues in qualitative research methods* (pp. 212–223). Thousand Oaks, CA: Sage.
- . (1994b). The grounded theory method: Its uses and processes. In B. G. Glaser (Ed.), *More grounded theory: A reader* (pp. 116–126). Mill Valley, CA: The Sociology Press.
- Straus, M. A. (1977). A sociological perspective on the prevention and treatment of wife-beating. In M. Roy (Ed.), *Battered women* (pp. 194–238). New York: Van Nostrand Reinhold.
- Straus, M. A., Gelles, R. J., & Steinmetz, S. (1980). *Behind closed doors*. Garden City, NY: Doubleday.
- Strauss, A. L. (1959). *Mirrors and masks*. Mill Valley, CA: The Sociology Press.
- . (1978a). A social worlds perspective. *Studies in Symbolic Interaction*, 1, 119–128.
- . (1978b). *Negotiations: Varieties, contexts, processes and social order*. San Francisco: Jossey Bass.
- . (1987). *Qualitative analysis for social scientists*. New York: Cambridge University Press.
- . (1993). *Continual permutations of action*. New York: Aldine de Gruyter.
- . (1995). Notes on the nature and development of general theories. *Qualitative Inquiry*, 1, 7–18.
- Strauss, A., & Corbin, J. (1990). *Basics of qualitative research: Grounded theory procedures and techniques*. Newbury Park, CA: Sage.
- . (1994). Grounded theory methodology: An overview. In N. K. Denzin & Y. S. Lincoln (Eds.), *Handbook of qualitative research* (pp. 273–285). Thousand Oaks, CA: Sage.
- . (1998). *Basics of qualitative research: Grounded theory procedures and techniques* (2nd ed.). Thousand Oaks, CA: Sage.
- Strauss, A. L., & Glaser, B. G. (1970). *Anguish*. Mill Valley, CA: The Sociology Press.
- Strauss, A. L., Schatzman, L., Bucher, R., Ehrlich, D., & Sabshin, M. (1963). The hospital and its negotiated order. In E. Friedson (Ed.), *The hospital in modern society* (pp. 147–168). Glencoe, IL: Free Press.
- Thomas, J. (1993). *Doing critical ethnography*. Newbury Park, CA: Sage.
- Thorne, S. E. (2001). The implications of disciplinary agenda on quality criteria for qualitative research. In J. M. Morse, J. M. Swanson, & A. Kuzel (Eds.), *The nature of qualitative evidence* (pp. 141–159). Thousand Oaks, CA: Sage.
- Thorne, S., Jensen, L., Kearney, M. H., Noblit, G., & Sandelowski, M. (2004). Qualitative metasynthesis: Reflections on methodological orientation and ideological agenda. *Qualitative Health Research*, 14, 1342–1365.
- Thulesius, H., Håkansson, A., & Petersson, K. (2003). Balancing: A basic process in the end-of-life care. *Qualitative Health Research*, 13, 1357–1377.
- Timmermans, S. (1999). *Sudden death and the myth of CPR*. Philadelphia, PA: Temple University Press.
- Turner, B. S. (1992). *Regulating bodies: Essays in medical sociology*. London: Routledge.
- Tweed, A. E., & Salter, D. P. (2000). A conflict of responsibilities: A grounded theory study of clinical psychologists' experiences of client non-attendance within the British National Health Service. *British Journal of Medical Psychology*, 73, 465–481.

- Urquhart, C. (1998) Exploring analyst-client communication: Using grounded theory techniques to investigate interaction in informal requirements. In A. S., Lee, J., Liebenau, & J. I. DeGross (Eds.), *Information systems and qualitative research* (149–181). London: Chapman & Hall.
- . (2003). Re-grounding grounded theory—or reinforcing old prejudices?: A brief response to Bryant. *Journal of Information Technology Theory and Application*, 4, 43–54.
- van den Hoonaard, W. C. (1997). *Working with sensitizing concepts: Analytical field research*. Thousand Oaks, CA: Sage.
- Van Maanen, J. (1988). *Tales of the field*. Chicago: University of Chicago Press.
- Walker, L. E. (1979). *The battered woman*. New York: Harper & Row.
- . (1989). *Terrifying love*. New York: Harper & Row.
- Wiener, C. L. (2000). *The elusive quest: Accountability in hospitals*. New York: Aldine de Gruyter.
- Williams, G. (1984). The genesis of chronic illness: Narrative reconstruction. *Sociology of Health & Illness*, 6, 175–200.
- Wilson, H. S., & Hutchinson, S. (1991). Triangulation of qualitative methods: Heideggerian hermeneutics and grounded theory. *Qualitative Health Research*, 1, 263–276.
- . (1996). Methodologic mistakes in grounded theory. *Nursing Research*, 4(2), 122–124.
- Wuest, J. (2000). Negotiating with helping systems: An example of grounded theory evolving through emergent fit. *Qualitative Health Research*, 10, 51–70.
- Zola, I. K. (1982). *Missing pieces: A chronicle of living with a disability*. Philadelphia, PA: Temple University Press.
- . (1991). Bringing our bodies and ourselves back in: Reflections on a past, present, and future 'Medical Sociology.' *Journal of Health and Social Behavior*, 32, 1–16.